



King Architecture PLLC is not responsible for safety programs, methods and procedures of operations, or the construction of the design shown on these drawings. Drawings are for use on this project only and are not intended for reuse without written approval. Drawings are not to be used in any manner that would constitute a detriment or liability directly or indirectly to King Architecture.  
© COPYRIGHT 2025  
If this drawing image is less than 22 1/2" x 34 1/8", it has been reduced and must be scaled accordingly. Contractor shall verify and be responsible for all dimensions and conditions on the job. King Architecture is to be notified of any variations from the dimensions and conditions shown on the drawings, or discrepancies found within the drawings. Shop drawings, etc., are to be submitted to King Architecture for review prior to fabrication and/or installation.

HILLCREST

COMMUNITY  
RESOURCE  
CENTER

ISSUE:

DATE ISSUED:

REVISIONS

NO	DATE	ISSUE

PERSPECTIVE

PROJECT NO:

SCALE:

DRAWN BY:

FILE:

A0.2

King Architecture PLLC is not responsible for safety programs, methods and procedures of operations, or the construction of the design shown on these drawings. Drawings are for use on this project only and are not intended for reuse without written approval. Drawings are not to be used in any manner that would constitute a detriment or liability directly or indirectly to King Architecture  
© COPYRIGHT 2025  
If this drawing image is less than 22 1/2" x 34 1/16", it has been reduced and must be scaled accordingly. Contractor shall verify and be responsible for all dimensions and conditions on the job. King Architecture is to be notified of any variations from the dimensions and conditions shown on the drawings, or discrepancies found within the drawings. Shop drawings, etc., are to be submitted to King Architecture for review prior to fabrication and/or installation.

HILLCREST

COMMUNITY  
RESOURCE  
CENTER



SPACE COLOR LEGEND

	PLAY AREA
	CIRCULATION
	OFFICE
	MECHANICAL / ELECTRICAL
	STORAGE
	REST ROOM
	FOOD SERVICE (FOOD BANK / KITCHEN)
	CLASSROOM

1 LOWER LEVEL FLOOR PLAN - ADDITION  
A2.3 1/8" = 1'-0"

LOWER LEVEL  
FLOOR PLAN -  
ADDITION

PROJECT NO: \_\_\_\_\_  
SCALE: 1/8" = 1'-0"  
DRAWN BY: \_\_\_\_\_  
FILE: \_\_\_\_\_

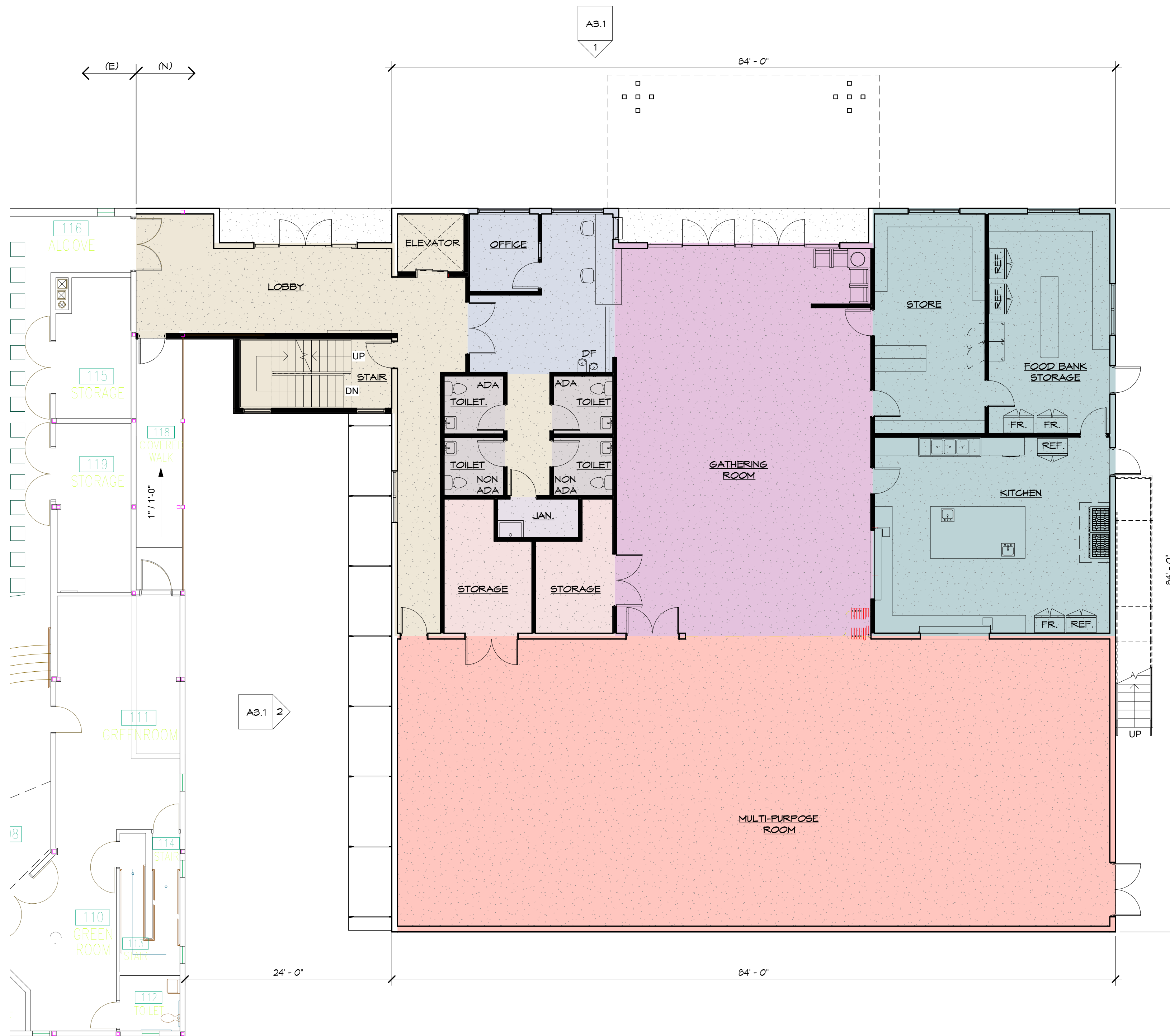
HILLCREST  
COMMUNITY  
RESOURCE  
CENTER

ISSUE:		
DATE ISSUED:		
REVISIONS		
NO	DATE	ISSUE

MAIN & UPPER  
LEVEL FLOOR  
PLANS -  
ADDITION

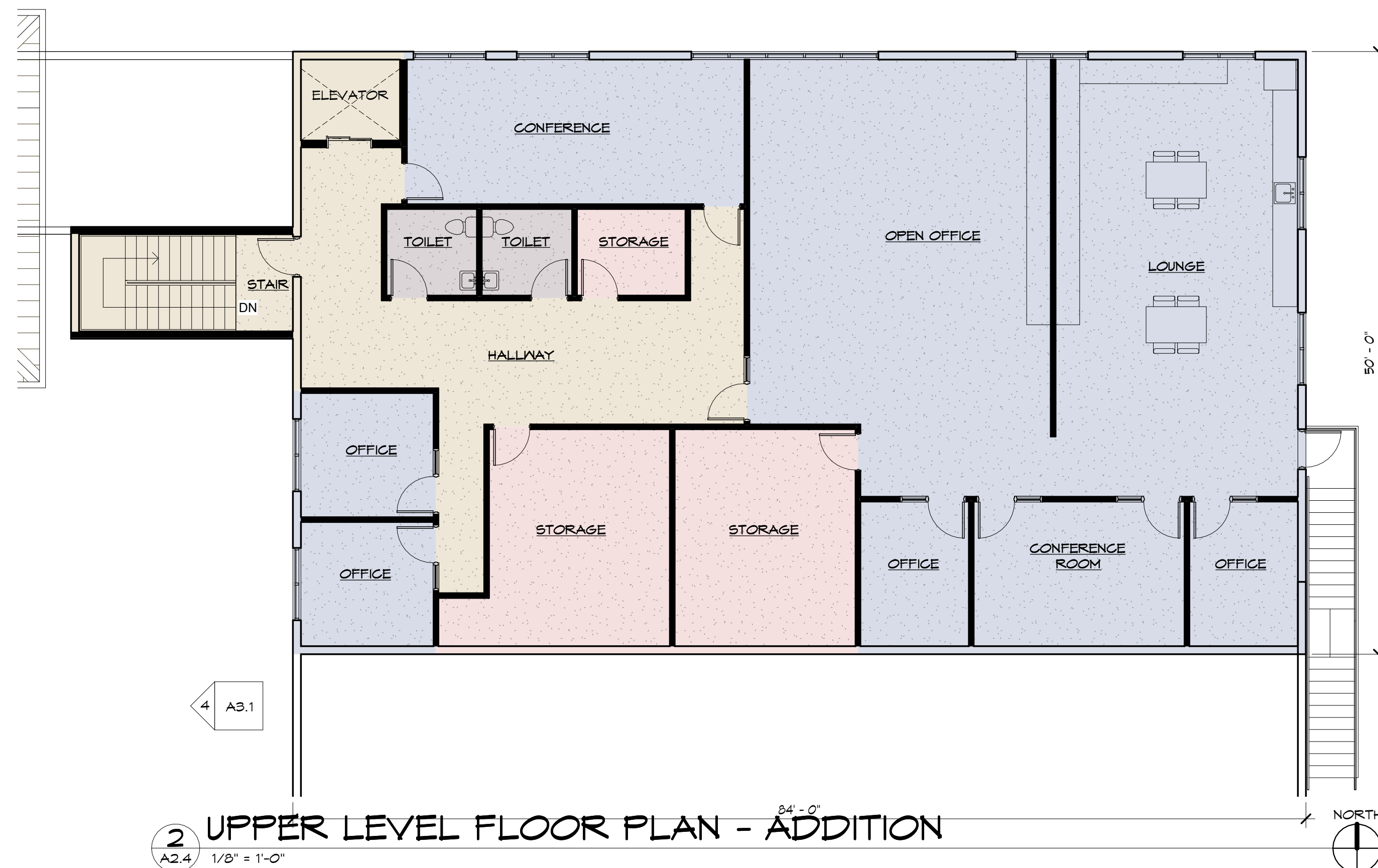
PROJECT NO: \_\_\_\_\_  
SCALE: 1/8" = 1'-0"  
DRAWN BY: \_\_\_\_\_  
FILE: \_\_\_\_\_

A2.4



1 MAIN LEVEL FLOOR PLAN - ADDITION

A2.4 1/8" = 1'-0"



2 UPPER LEVEL FLOOR PLAN - ADDITION

A2.4 1/8" = 1'-0"

SPACE COLOR LEGEND

CIRCULATION	OFFICE
MECHANICAL / ELECTRICAL	STORAGE
GATHERING ROOM	REST ROOM
FOOD SERVICE (FOOD BANK / KITCHEN)	MULTI-PURPOSE ROOM

King Architecture PLLC is not responsible for safety programs, methods and procedures of operations, or the construction of the design shown on these drawings. Drawings are for use on this project only and are not intended for reuse without written approval. Drawings are not to be used in any manner that would constitute a detriment or liability directly or indirectly to King Architecture  
© COPYRIGHT 2025  
If this drawing image is less than 22 1/2" x 34 1/16", it has been reduced and must be scaled accordingly. Contractor shall verify and be responsible for all dimensions and conditions on the job. King Architecture is to be notified of any variations from the dimensions and conditions shown on the drawings, or discrepancies found within the drawings. Shop drawings, etc., are to be submitted to King Architecture for review prior to fabrication and/or installation.

HILLCREST

COMMUNITY  
RESOURCE  
CENTER

ISSUE:

DATE ISSUED:

REVISIONS		
NO	DATE	ISSUE

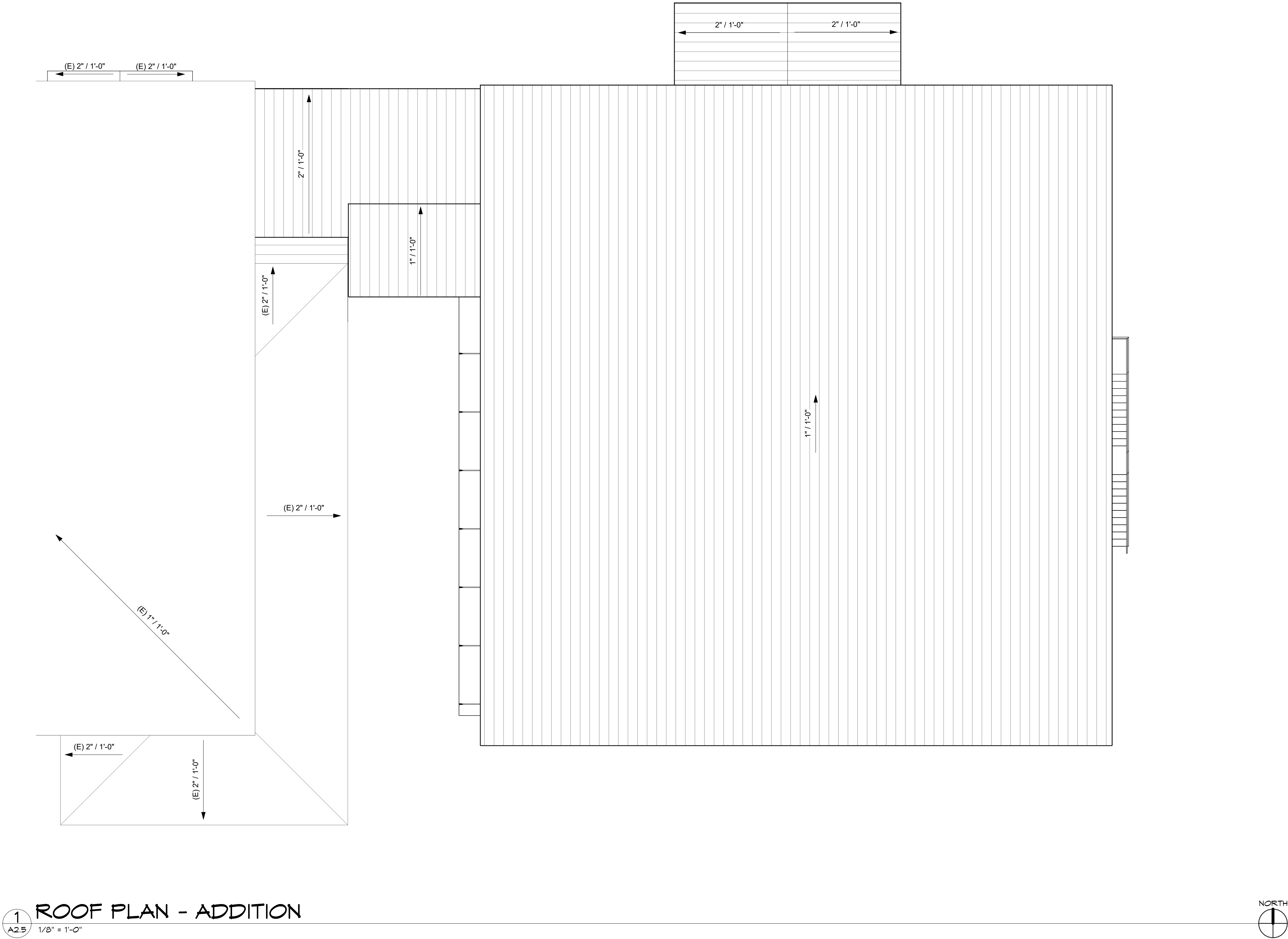
ROOF PLAN -  
ADDITION

PROJECT NO:

SCALE: 1/8" = 1'-0"

DRAWN BY:

FILE:



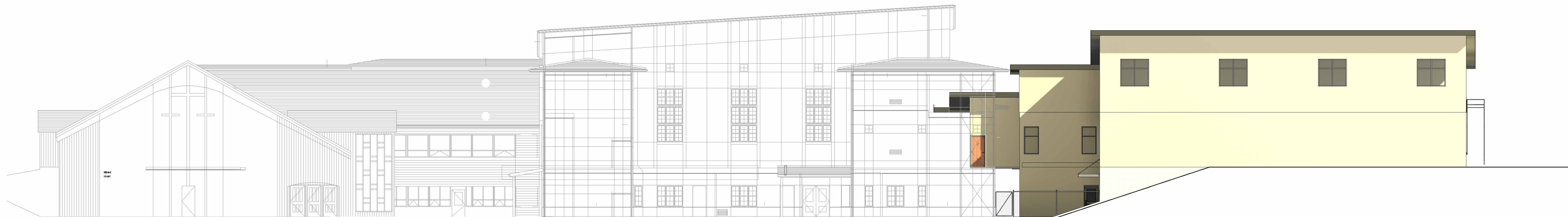
A2.5



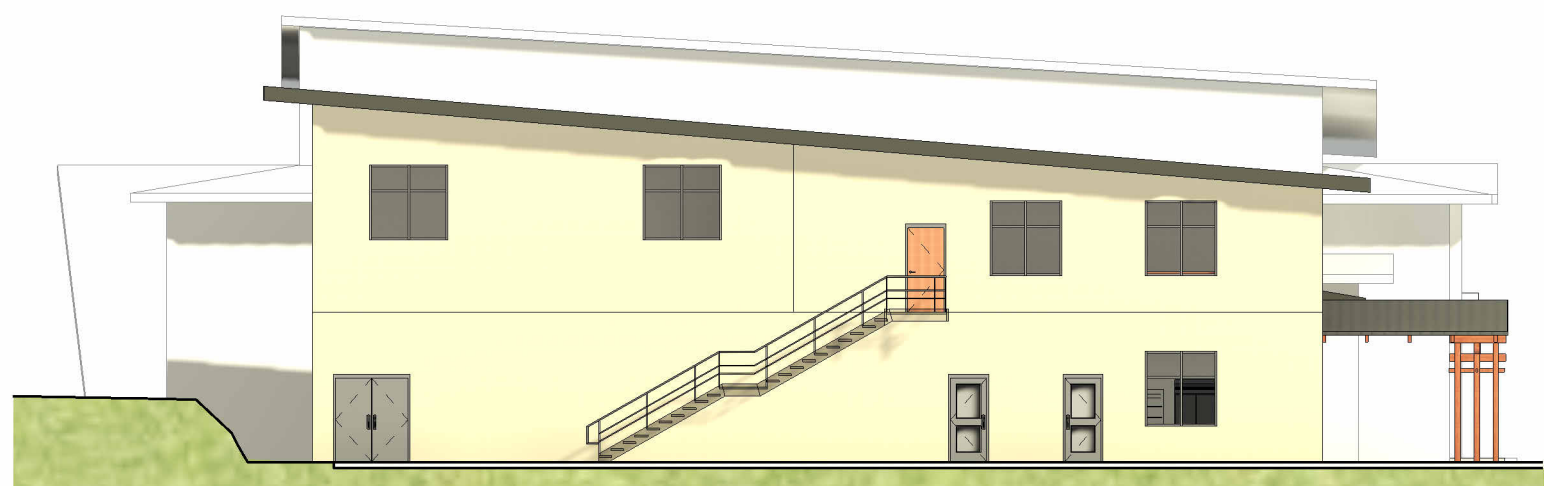
1 NORTH ELEVATION A  
A3.1 1/16" = 1'-0"



2 WEST ELEVATION A  
A3.1 1/16" = 1'-0"



3 SOUTH ELEVATION A  
A3.1 1/16" = 1'-0"



4 EAST ELEVATION A  
A3.1 1/16" = 1'-0"

REVISIONS		
NO	DATE	ISSUE